

# Plan 3303

---



This story and a half cottage home features 3 bedrooms, 2 baths, and a detached garage and covered front porch, all in a compact 1,290 sf.

The first floor features a large living/dining room and open kitchen, a main floor bedroom and bathroom. Upstairs are two additional bedrooms and a second bath.

BLUE STONE  
design group

[thebluestonedesigngroup.com](http://thebluestonedesigngroup.com)

# Plan 3303

Cottage Series

One and One-half Story  
1,290 finished square feet  
Crawl Space or Basement  
3 bedrooms  
2 baths  
Detached Garage

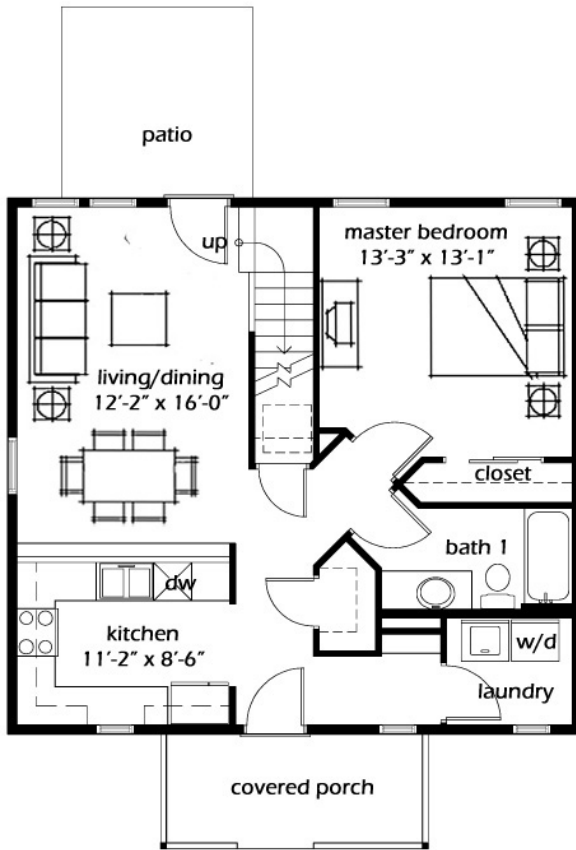
Overall Dimensions  
30' x 34'

## Design Features

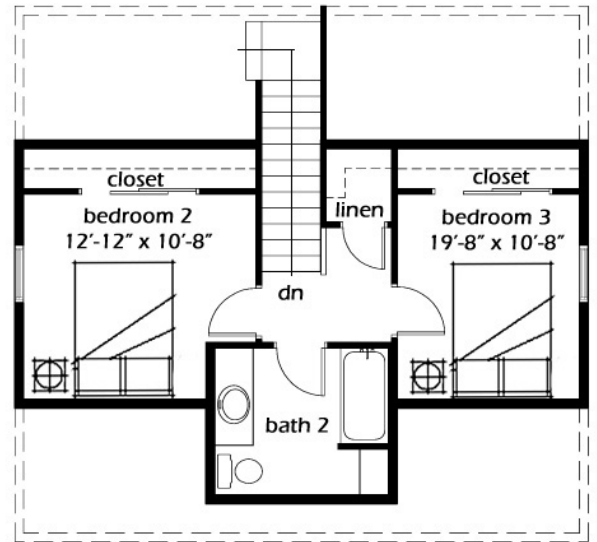
Large Front Porch  
Living in Place Design  
All Interior Doorways 2'-10"  
3'-6" Wide Hallways  
Crawl Space Construction  
Opt. Basement Plans Included

## Energy Features

2x6 Construction  
Small Footprint  
Simple Construction  
Tankless Hot Water  
90% Efficient Furnace  
Attic Fan  
Attic Truss Design



**Main Level**  
840 sq. ft.



**Second Level**  
450 sq. ft.

**Preliminary**

**BLUE STONE**  
design group

[thebluestonedesigngroup.com](http://thebluestonedesigngroup.com)